



Boro Bandhu

Let's take a water-wise step towards sustainable Boro Rice cultivation

PROBLEM

Only

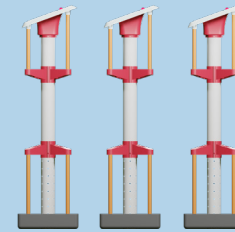
0.22kg

of paddy is produced for every cubic meter of water used in India

Introducing a resilient and reliable companion for Boro farmers - a device that stands upright in harsh weather to monitor water levels in paddy fields. Taking real-time feedback, it ensures farmers can work on other tasks while the device reduces the cost and time of frequent field visits.

Additionally, by raising awareness about proper water management, it can help reduce the risk of groundwater contamination making Boro farming more sustainable for future generations.

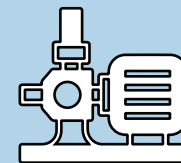
SOLUTION



Boro Bandhu sensors take readings of water level



Mobile phone update over app or SMS



Control the pump remotely



An IOT enabled smart water monitoring device for boro(paddy) farmer's convenience of irrigation and prevention of overirrigation.



Easy to install



Easy to repair



Solarpowered



Waterproof

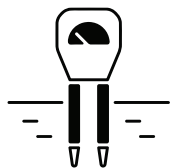


Adaptive design

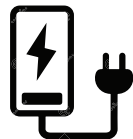


Locally available parts

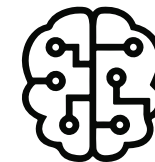
Future proposals



Soil sensor integration

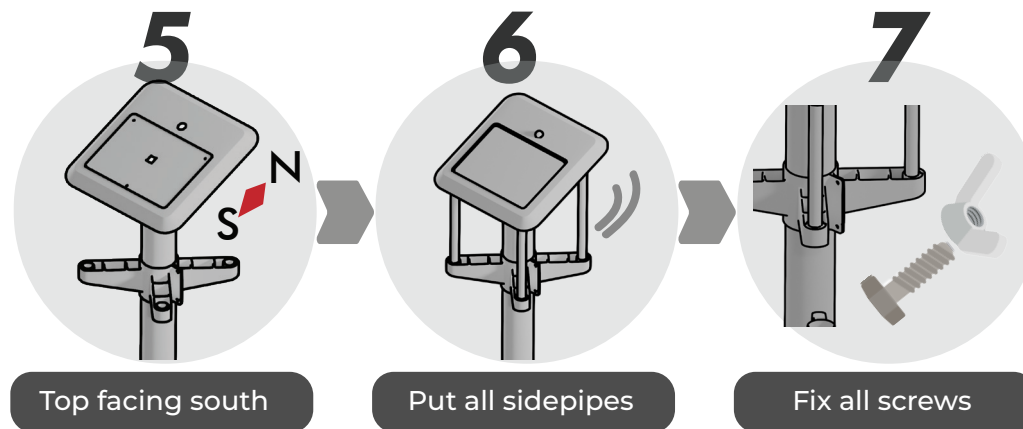
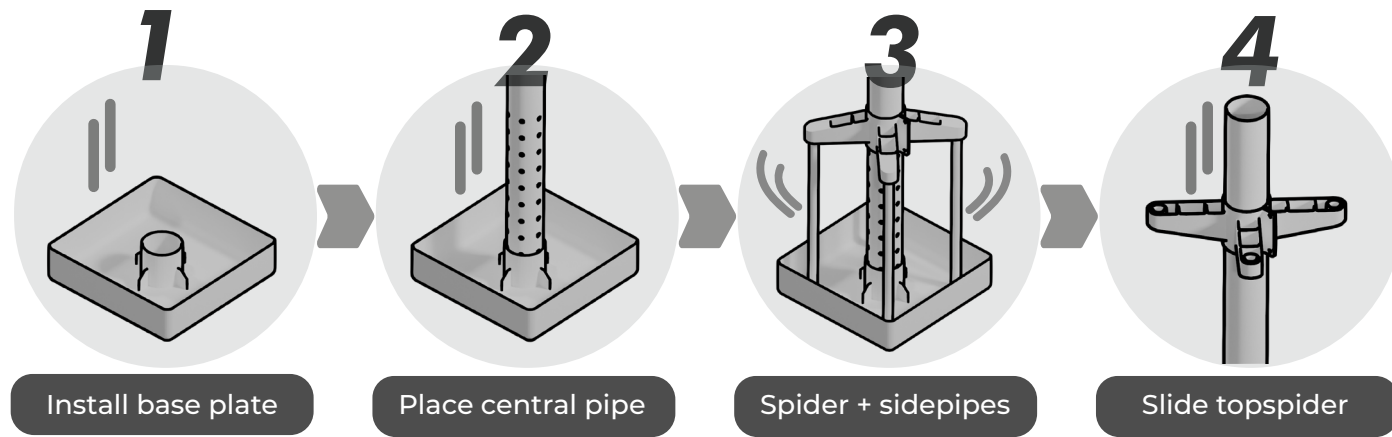


Mobile charging station

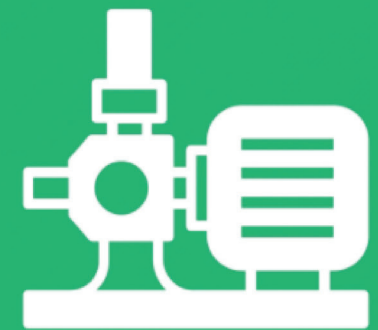
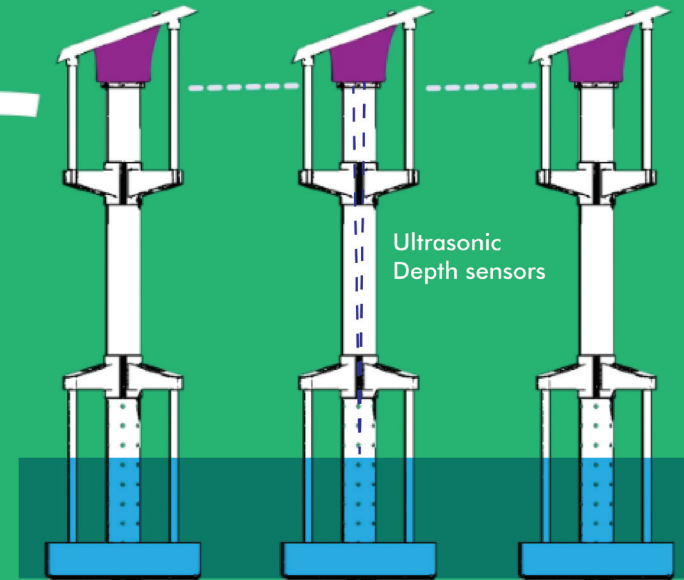
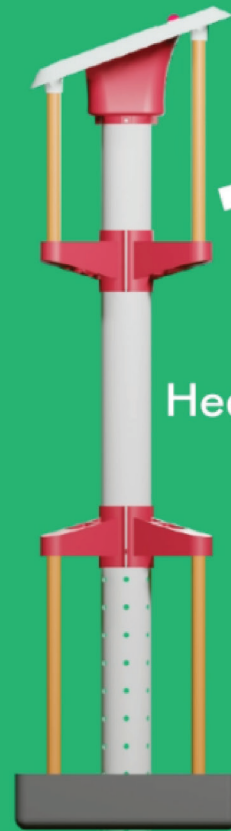


AI and ML integration

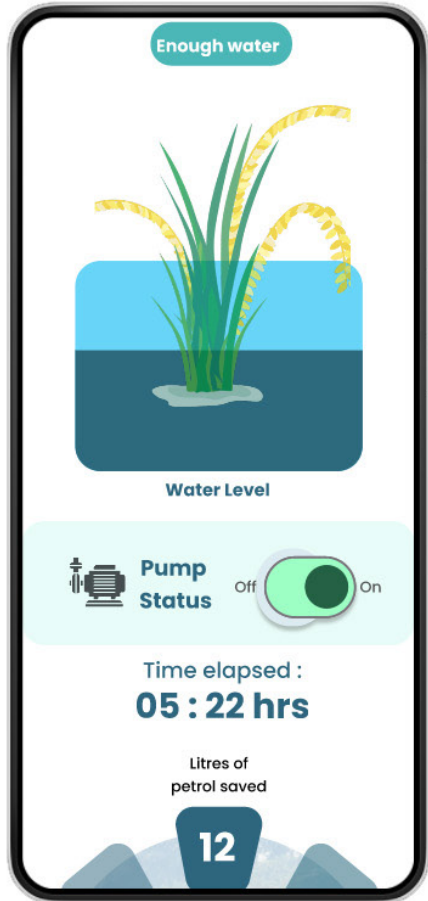
Easy to Install



SMS + App
update



Pump station



E its filled . Please turn off the pump120cm

